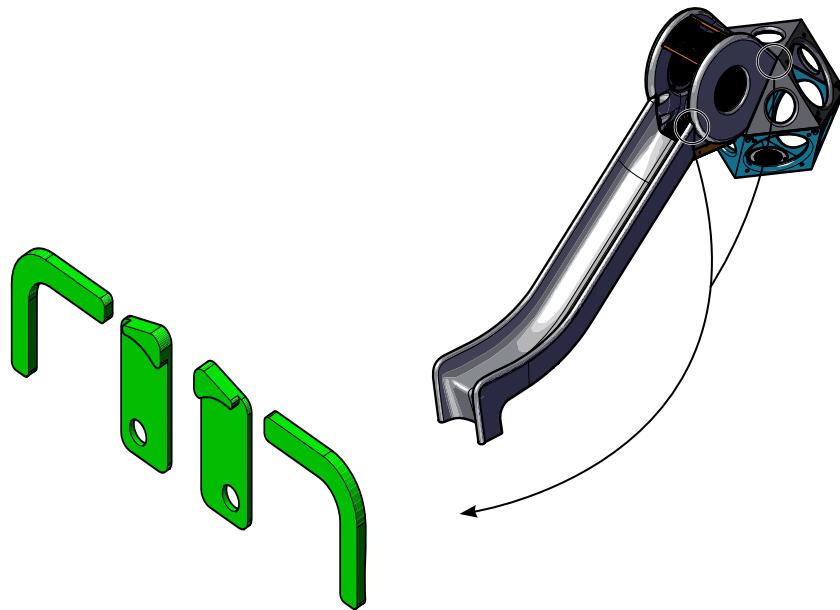


Installation Instructions

Universal Model UN8757
EN Kit for Playcubes Plastic Slide


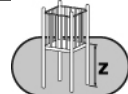

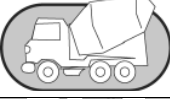





Assembly View

Installation Preparation

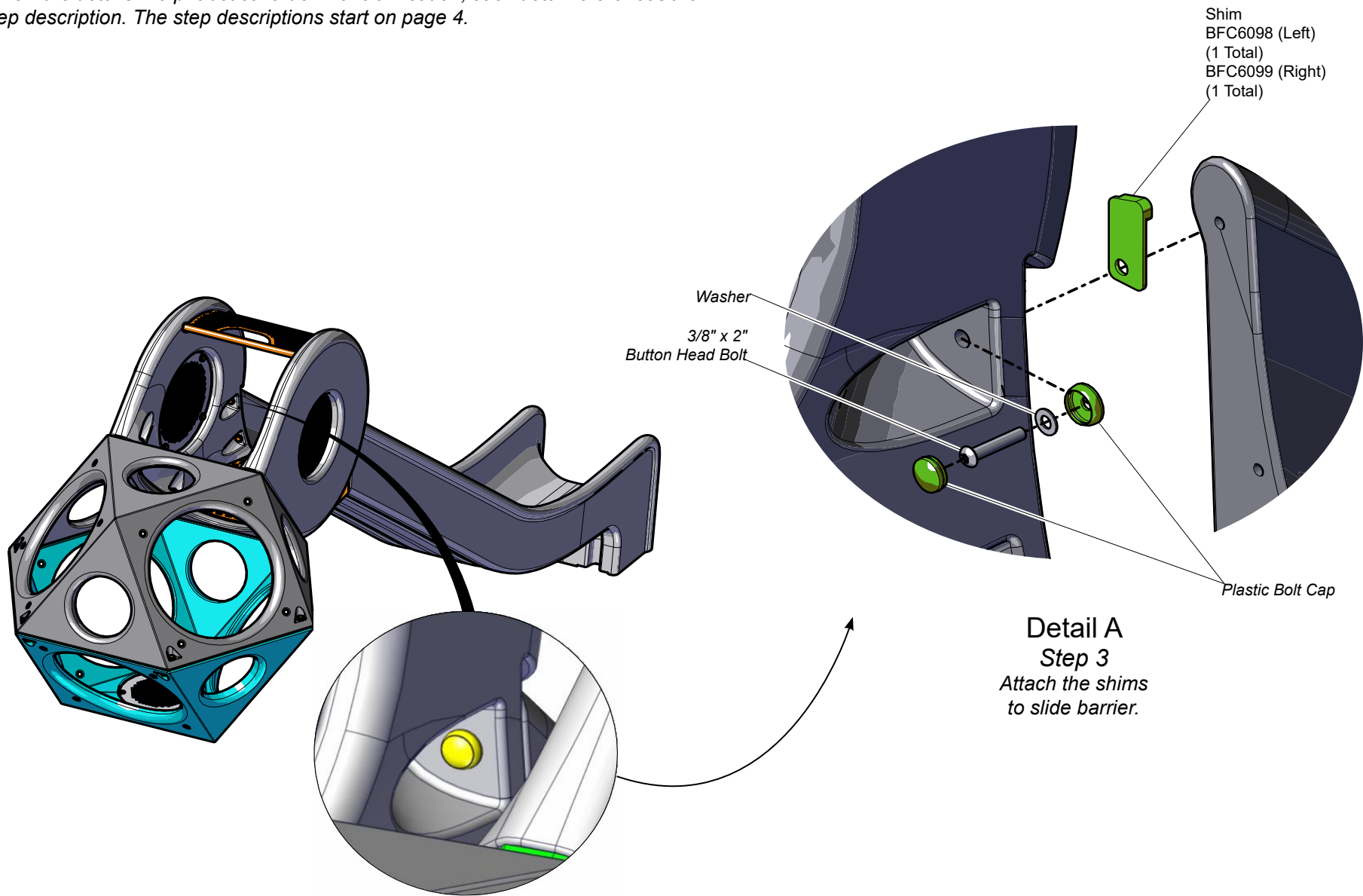
Recommended Crew: One (1) Adult

Installation Time (In-Ground):..... 15 minutes

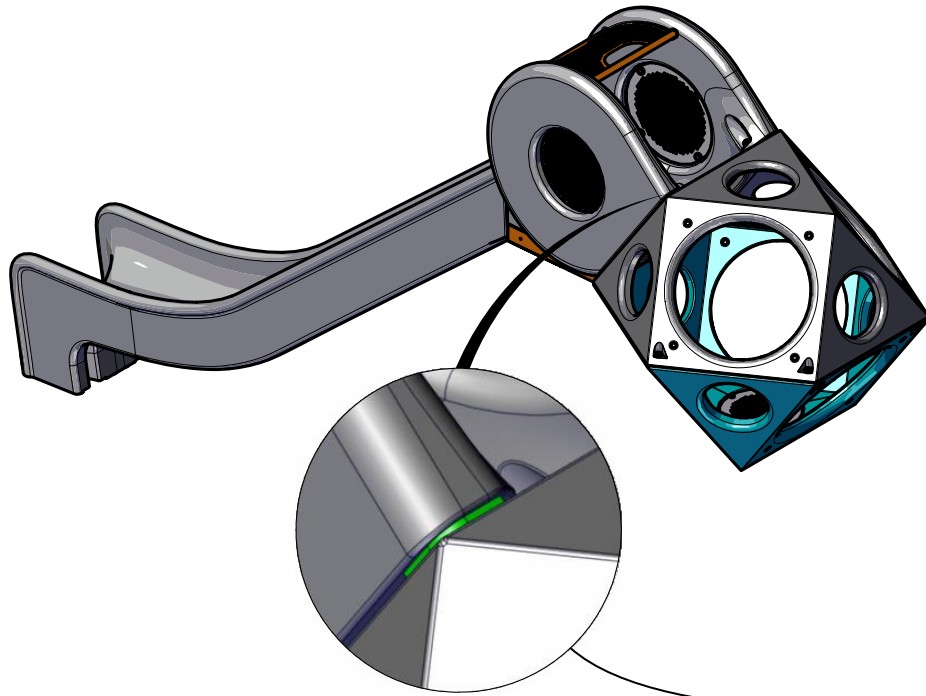
ICON KEY			
	Fully Tighten Hardware		Critical Fall Height
	Do Not Fully Tighten Hardware		Pour Concrete
	Drill		Dig Footing Holes
	Hammer		

Installation Instructions

Follow the details in alphabetical order. For clarification, each detail references the step description. The step descriptions start on page 4.

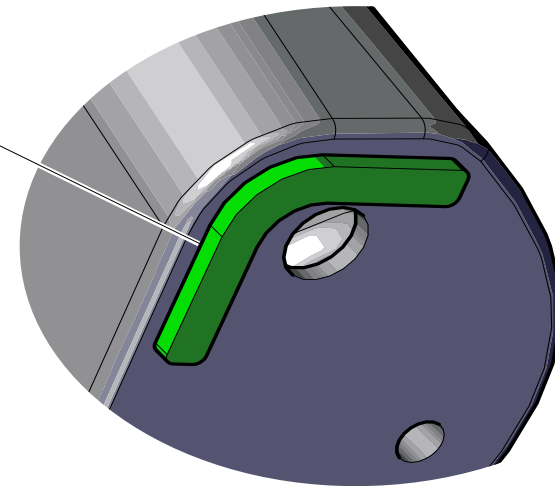


Installation Instructions



Detail B
Step 4
Attach the gaskets.

Gasket
AMC1160
(2 Total)



Note: Peel the backing off of the foam gasket and apply the adhesive side to the slide barrier, then attach playcube.

Installation Instructions

Bill of Materials

Notes Before You Begin: Do not over tighten bolts during assembly, only snug tighten them until assembly is complete unless otherwise instructed.

Carefully read and understand these installation instructions before you begin.

Step 1: Before attempting to assemble your equipment, please review all installation information carefully. Should you experience any difficulty during the installation process, please call us at the phone number shown on the last page of these instructions.

Step 2: Separate and identify all components and hardware.

Step 3: Attach the shims to the slide barrier. See **Detail A**. Place the shim in between the slide and slide barrier and attach as shown.

Step 4: Attach the the gaskets. See **Detail B**. Peel the backing off of the foam gasket and apply the adhesive side to the slide barrier, then attach playcube.

Final Details.

Step 5: Tighten **all** fasteners. Fully tighten all fasteners according to tightening torque specifications.

Torque Specifications:

Bolts and nuts - Snug tighten and then tighten an additional one half turn.

UN8757 - EN KIT FOR PLAYCUBES PLASTIC SLIDE

PART NO.	DESCRIPTION	QTY.
AMC1160	MISC. - 2.75" x 2.75" x .25" GASKET	2
BFC6098	SHEET - EN SHIM - PLAYCUBES SLIDE - LEFT	1
BFC6099	SHEET - EN SHIM - PLAYCUBES SLIDE - RIGHT	1



The world needs play.[®]

For Customer Service, Call
800-233-8404 or
570-522-9800 OUTSIDE U.S.

1000 Buffalo Road • Lewisburg, PA 17837
www.playworld.com



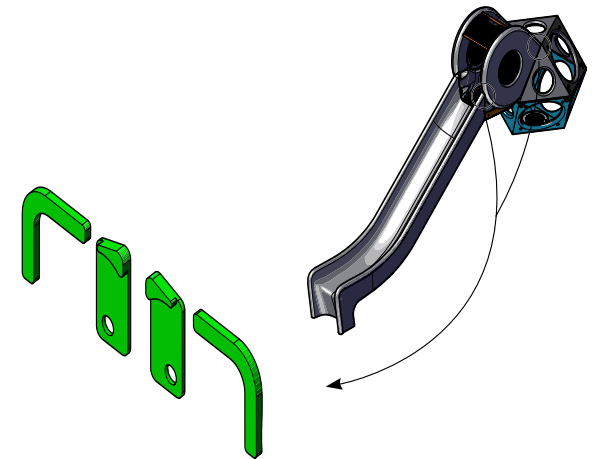
Plastic Parts

- Inspect all plastic surfaces for sharp points, cracks or jagged edges. If any damage is detected and is determined to be unsafe, barricade equipment to prevent use until repair is completed. Minor burrs or sharp edges may be removed by using a sharp utility knife or block plane to remove sharp burr.

Replacement Parts

- Refer to your installation instructions to obtain replacement part number.
- Contact your sales representative or call Playworld Systems' Customer Service for a replacement part.

Equipment Maintenance
Universal Model UN8757
EN Kit for Playcubes Plastic Slide



 **PLAYWORLD**
The world needs play.™

For Customer Service, Call
800-233-8404 or
570-522-9800 OUTSIDE U.S.
1000 Buffalo Road • Lewisburg, PA 17837
www.playworld.com

Inspection Form

Preventive Maintenance

... for Safety's Sake!

- Be sure that you are using a copy of this Inspection Form and not your original.
- Use the Inspection Codes listed below and record condition of equipment at time of examination on the Inspection Checklist.
- Document any item from the Inspection Checklist that will require maintenance along with any corrective action on the Maintenance Schedule.
- Be sure to include appropriate dates and signatures on each section to properly document maintenance procedure.

INSPECTION CHECKLIST

	Frequency	Inspection Code	Date	Date Repairs Completed
Inspect plastic parts for damage.	Medium			

Inspection Codes P = Pass F = Fail NA = Not Applicable
--

Inspector: Name (Please Print) _____ Signature: _____ Date: ___ / ___ / ___

MAINTENANCE SCHEDULE

Item in Question	Description of Problem	Corrective Action	Date

Repairer: Name (Please Print) _____ Signature: _____ Date: ___ / ___ / ___

