



Product Service

CERTIFICATE

No. Z2 17 03 50646 066

Holder of Certificate: Norleg A/SVirkefeltet 1
8740 Brædstrup
DENMARK**Certification Mark:****Product: Combination playing construction**

The product was tested on a voluntary basis and complies with the essential requirements. The certification mark shown above can be affixed on the product. It is not permitted to alter the certification mark in any way. In addition the certification holder must not transfer the certificate to third parties. See also notes overleaf.

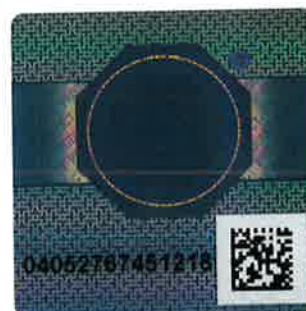
Test report no.: 713101138

Valid until: 2022-03-05

Date, 2017-03-08

(Tobias Hofmann)

Page 1 of 2





Product Service

CERTIFICATE**No. Z2 17 03 50646 066****Model(s):**

LE20419, LE20850, LE20109, LE20390, LE20407,
LE20415, LE20417, LE20464, LE20705, LE20851,
LE20852, LE20858, LE20937, LE20939, N3110,
N3112, N3114, N3116, N3117, N3118, N3119,
N3120, N3121, N3210, N3212, N3215, N3220,
N3222, N3230, N3240, N3251, N3252, N3253,
N3261, N3262, N3410, N3420, N4012, N9032;

Parameters:

Model: dimensions

LE20109: safety area 9.30 x 9.20 m
LE20390: safety area 9.57 x 13.58 m
LE20407: safety area 6.70 x 9.70 m
LE20415: safety area 7.30 x 10.40 m
LE20417: safety area 6.30 x 9.20 m
LE20419: safety area 8 x 11.3 m
LE20464: safety area 7.10 x 15.80 m
LE20705: safety area 15.80 x 7.13 m
LE20850: safety area 5.80 x 7.00 m
LE20851: safety area 9.40 x 4.60 m
LE20852: safety area 4.63 x 6.14 m
LE20858: safety area 9.20 x 8.30 m
LE20937: safety area 9.50 x 11.60 m
LE20939: safety area 9.50 x 11.60 m
N3110: L x H = 2.05 x 1.30 m
N3112: L x H = 1.96 x 1.30 m
N3114: L x H = 2.05 x 1.30 m
N3116: L x H = 2.05 x 1.30 m
N3117: L x W = 0.90 x 1.75 m
N3118: L x H = 2.10 x 1.30 m
N3119: L x H = 2.00 x 1.30 m
N3120: L x W x H = 2.41 x 1.25 x 1.26 m
N3121: L x H = 2.10 x 1.30 m
N3210: L x H = 2.10 x 1.45 m
N3212: L x W = 1.95 x 2.10 m
N3215: L x W x H = 2.28 x 2.28 x 0.95 m
N3220: H = 0.4 m
N3222: L x H = 2.05 x 0.45 m
N3230: H = 0.26/1.26 m
N3240: H = 0.25/0.35 m
N3251: L x H = 1.00 x 1.30 m
N3252: safety area 4.90 x 3.00 m
N3253: safety area 5.80 x 3.00 m
N3261: safety area 6.00 x 1.75 m
N3262: safety area 6.00 x 3.36 m
N3410: safety area 5.30 x 3.40 m
N3420: L x H = 2.05 x 1.24 m
N4012: L x H = 2.05 x 1.30 m
N9032: safety area 8.90 x 7.55 m
Material: robinia, douglas, larch, steel
EN 1176-1:2008
EN 1176-3:2008

**Tested
according to:****Production
Facility(ies):**

50646

Page 2 of 2