

**Components List**  
**ARENA "SWEDEN"**  
 Drawing No:36413C\_Item1

Code	Description	Qty	Weight (kgs)	Extended	Extended Concrete
SA1LB	LOWER BAR FRAME 1M	2	47.20	0.00	
SA2LB	LOWER BAR FRAME 2M	50	1,980.00	0.00	
SA2MG	MINI GOAL	4	0.00	0.00	
SA2UM	UPPER MESH FRAME 2M	12	379.20	0.00	
SAACLB	CURVED BAR FRAME	4	61.20	0.00	
SAEPS	ACCESS SIDE PANEL - S HT	2	26.40	1.12	
SAG2B	GOAL SECTION	2	708.00	2.02	
SAGAM	ARCH SIDE PANEL- MESH	4	188.80	0.00	
SAMBR	1.2M REACH BOARD & HOOP	2	188.94	0.00	
SAP10	1.0M HIGH POST	44	660.00	2.20	
SAP20	2.0M HIGH POST	16	336.00	1.01	
		142	4,575.74	6.35	

REFER TO ARENA INSTALLATION INSTRUCTIONS FOR COMPONENT ID AND INSTALLATION

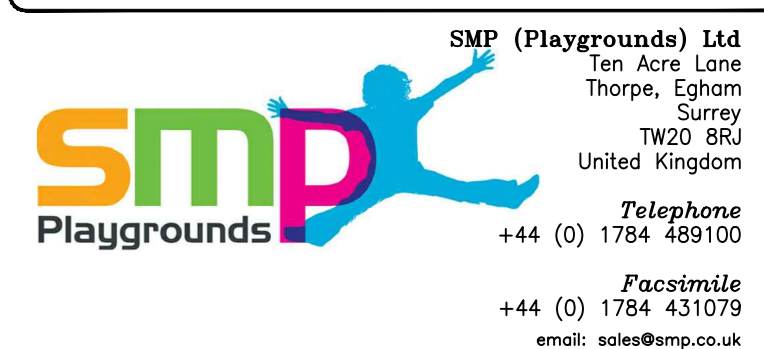
**REVISION**

21/02/06	ORIGINAL	ISSUE A
10/04/07	AMENDMENT BY J.A. CHR BY J.C. 4.00 SA2MG ADDED	ISSUE B
11/06/07	AMENDMENT BY N.B. CHR BY J.A. PAPER SPACE UPDATED. CONCRETE SPECIFICATION ADDED.	ISSUE C
28/06/07	AMENDMENT BY N.B. CHR BY J.C. MISSING COMPONENT CODE (SAGAM x 2 SHOWN).	ISSUE D

**CUSTOMER**  
 HAGS ANEBY AB

**PROJECT**  
 ARENA SPORTS SYSTEM

**TITLE**  
 ARENA "SWEDEN"

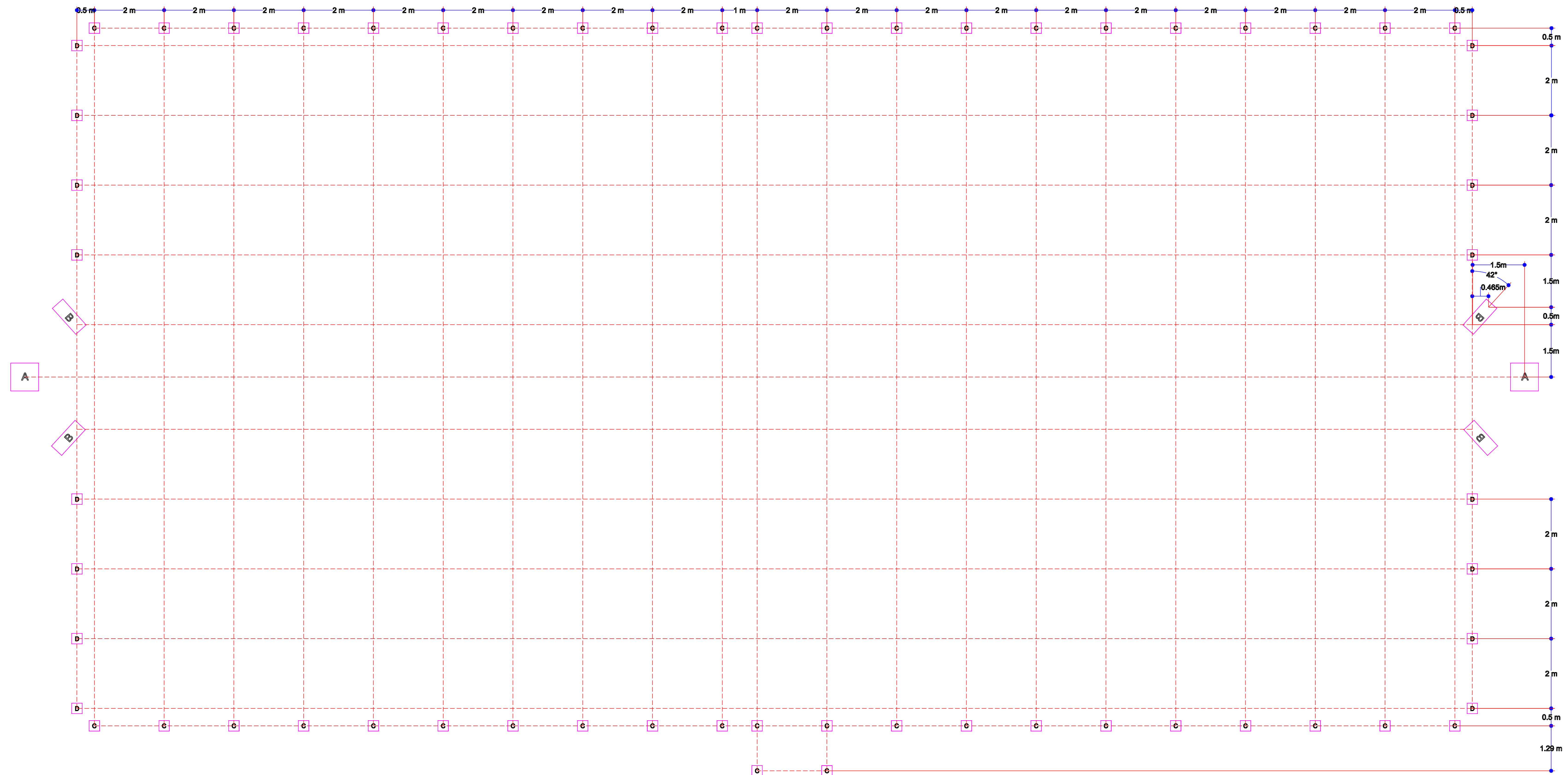


SMP RECOMMEND THE PROVISION OF IMPACT ABSORBING SURFACING BENEATH ALL PLAY EQUIPMENT



DATE 21/02/06 SCALE 1:50 @ A0  
 DRAWN BY : S.M. CHECKED BY : J.C.

DRAWING No. 36413 ISSUE D



**CONCRETE SPEC. KEY**  
 LENGTH x WIDTH x DEPTH

<b>A</b>	800 x 800 x 700
<b>B</b>	1000 x 400 x 700
<b>C</b>	300 x 300 x 550
<b>D</b>	300 x 300 x 700

DIMENSIONS SHOWN ARE MINIMUM ONLY.

REVISION

CUSTOMER

HAGS ANEBY AB

PROJECT

ARENA SPORTS SYSTEM

TITLE

CONCRETE SPECIFICATIONS

SMP (Playgrounds) Ltd.



SMP RECOMMEND THE PROVISION OF IMPACT ABSORBING SURFACING BENEATH ALL PLAY EQUIPMENT



DATE 21/02/06 SCALE 1:50 @ A0

DRAWN BY : S.M. CHECKED BY : J.C.

DRAWING No. 36413 ISSUE D

© SMP (Playgrounds) Ltd. 2006 SHEET 2 OF 2